

## Building Your Virtual World.

Property Panorama offers a truly unique suite of virtual marketing and lead capture tools to MarketLinx's Board and MLS clients. By partnering with Property Panorama, MarketLinx is able to pass significant cost savings on to our clients. The average virtual tour provider charges nearly 40 times what agents pay for Property Panorama.

In just one year, over 15 MLS's representing more than 70,000 members have chosen to empower their Agents with Property Panorama's cutting-edge suite of marketing tools. As Property Panorama continues to enhance their suite of tools with even more great features, such as Interactive 3D Floor Plans and automated text message tours for cell phones, we are confident that you too will see the huge benefit that Property Panorama will provide to your membership.

### How it Works:

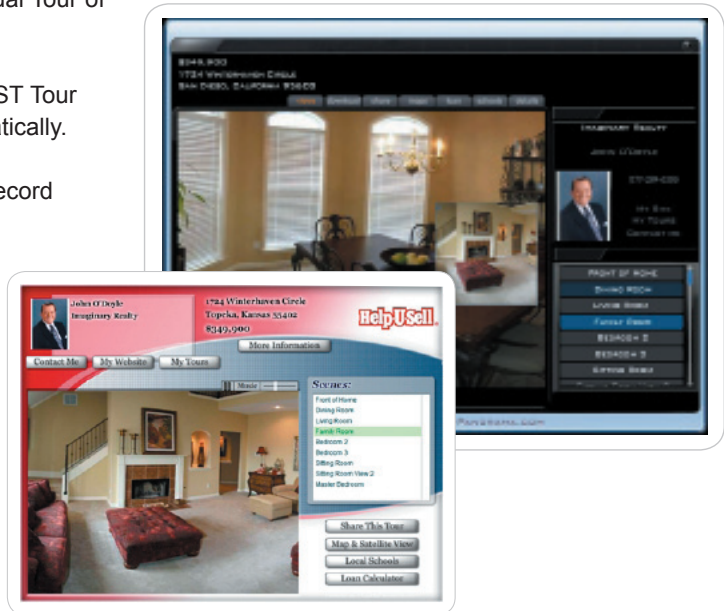
1. The Agent takes a series of pictures (no tripod required!) in each room of their newly listed property.
2. The highly-advanced online software automatically sorts the photos and converts them into immersive 360° Panoramas and 180° Panoramas.
3. Property Panorama combines these panoramic views with the property information to instantly create a cohesive Virtual Tour of the entire listing.
4. Property Panorama also creates a Video Tour, PodCAST Tour and MobileMedia Cell Phone Tour of the listing automatically.
5. The non-branded Virtual Tour is attached to the MLS record automatically.
6. Property Panorama advertises (optional) the listing on hundreds of the most popular sites on the Internet, including Realtor.com®, Google®, AOL® Video, Trulia®, Zillow®, and YouTube™ - the world's most visited site.

Ask how to get  
**Property Panorama for FREE**  
for your entire MLS!

### What users are saying...

*"Before trying Property Panorama's lead capture system, my company was already capturing more leads via the Internet than any other RE/MAX brokerage in the U.S., and had been holding the title of #1 in lead capture nationwide for over 3 years. After using Property Panorama's lead capture for only 3 weeks, our leads increased by an astonishing 307!"*

Gary Jacklin – Broker/Owner  
RE/MAX Action – Lisle, IL



## Features

- › **Unlimited Virtual Tours** - Create tours for any number of listings.
- › **Unlimited Video Tours** - Take advantage of the popularity of online video with Property Panorama's auto-generated video tours (no video camera needed)
- › **Unlimited PodCAST Tours** - Carry up to 900 listings in your pocket.
- › **Unlimited MobileMedia Cell Phone Tours** - New Auto-Text reply tours with integrated lead capture take advantage of drive-by traffic in a way never before possible.
- › **Unlimited Images & Panoramas** – Include an unlimited number of still photos, 360° panoramas, and 180° panoramas of every listing.
- › **Extremely Easy-to-Use** - Property Panorama's intuitive online software automates nearly every aspect of tour creation, eliminating almost all of the effort for the Agent.
- › **Link Tours to any Web site** - Add tours to Company and Personal websites, and as many other sites as desired.
- › **Custom Branding** - Each tour can easily be customized to match the branding of your company and website.
- › **MLS Compliant Tours** - A non-branded tour is added to the MLS record automatically, enhancing the listing on the MLS while automating compliance with IDX rules.
- › **Patented Lead Capture** – Property Panorama's patented lead capture system turns all of the most popular sites on the Internet into 'lead capture engines' for your Agents.
- › **Tour Manager Software** – Property Panorama's easy-to-use online software assures that anyone can create the highest tours regardless of computer experience. Tour Manager is included at no additional charge to MarketLinx clients.

## Coming Soon!

Although already packed with features, Property Panorama is constantly developing new technologies to ensure that your Agents will always have the most cutting-edge tools available to market their listings. Pictured here is our new Interactive 3D Floor Plan, which will provide prospects with an unrivaled understanding of the layout and features of your Agents listings.



## Pricing

Property Panorama is available to MLS's through a site license, in which pricing is based on the total number of MLS members. Please contact your MarketLinx representative for pricing.

---

*A member of The First American Corporation (NYSE: FAF) family of companies, MarketLinx is a premier residential real estate information technology vendor that offers a full line of Agent, Broker, MLS and MLS-related products and services. MarketLinx serves some 150 MLS customers across the US and Canada representing about half of the REALTORS® in North America. MarketLinx serves some of the largest real estate organizations in the world, including eight that have more than 20,000 members each. MarketLinx also serves over 1300 broker customers, including both independent companies and brokerages that are part of major franchises.*

---

To learn more about Property Panorama, call 877.299.6306 or visit [www.PropertyPanorama.com/Marketlinx](http://www.PropertyPanorama.com/Marketlinx) today.

[www.marketlinx.com](http://www.marketlinx.com)